

아이비영어  
상위1%선생님



# Science Videos

for kids



Part 1



# 01 Learn About Dinosaur

[Click here to watch the video](#)



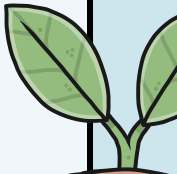
# VOCABULARY



A. Choose the correct words in the box to match their meaning.

reptiles  
continents  
fossil  
extinction  
ancient

- \_\_\_\_\_ 1. a type of animal that usually has dry scales, breathes air, and lays eggs.
- \_\_\_\_\_ 2. when a plant or animal disappears forever, like dinosaurs.
- \_\_\_\_\_ 3. something that is very old or existed in the distant past.
- \_\_\_\_\_ 4. old remains or imprints of animals and plants, like dinosaur bones.
- \_\_\_\_\_ 5. big pieces of land surrounded by water.





# VOCABULARY



B. Choose the correct words from the box to complete the sentences.

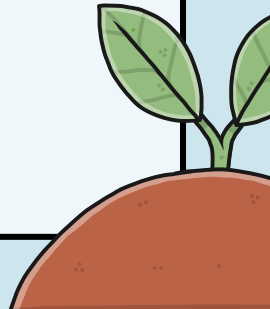
reptiles

continents

fossil

extinction

ancient

1. Although Dinosaurs were not lizards..they were \_\_\_\_\_.
  2. After the \_\_\_\_\_ of the Dinosaurs new and different kinds of animals began to develop and grow.
  3. They try to gather all the clues that are available with the knowledge they have learned; try to piece together the history of \_\_\_\_\_ life on our planet.
  4. The largest and most complete \_\_\_\_\_ skeleton of a T-Rex ever found is now on display at the Field Museum of Natural History in Chicago, Illinois.
  5. During the age of the Dinosaurs the \_\_\_\_\_ of the earth were mostly all linked together as one super continent.
- 



# COMPREHENSION QUESTIONS



A. Choose the correct answers.

01

What does the word "Dinosaur" mean in Greek?

- A. Giant Creature
- B. Terrible Lizard
- C. Ancient Reptile

02

What do Paleontologists do?

- A. Study living creatures
- B. Study ancient life forms and fossils
- C. Explore outer space



# COMPREHENSION QUESTIONS



A. Choose the correct answers.

03

Which tool is NOT used by Paleontologists during excavation?

- A. Pickaxe
- B. Dental picks
- C. Vacuum cleaner

04

What was the function of Triceratops' large boney frill and long horns?

- A) Defense
- B) Attracting mates
- C) Aiding in digestion

# COMPREHENSION ACTIVITY



B. Choose the correct answers.

paleontologist

carnivores

herbivore

Pangea

- \_\_\_\_\_ 1. A scientist who studies ancient life from fossils.
- \_\_\_\_\_ 2. An animal that eats plants.
- \_\_\_\_\_ 3. An animal that eats meat.
- \_\_\_\_\_ 4. The supercontinent that split into today's continents.

# TRUE OR FALSE?



C. Choose T if the statement is correct, but if it is false, change the underlined word to make the statement true.

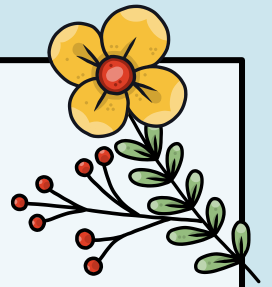
- \_\_\_\_\_ 1. Dinosaurs lived on Earth millions of years ago, long before humans existed.
- \_\_\_\_\_ 2. Paleontologists are scientists who study dinosaur bones, called fossils.
- \_\_\_\_\_ 3. Fossils of dinosaurs have been found on every cities of the world.
- \_\_\_\_\_ 4. Modern birds may be distantly related to dinosaurs because of similarities in their bone structure.





# DISCUSSION QUESTIONS

A. Answer the questions.



01 What was the most fascinating thing you learned from this video?

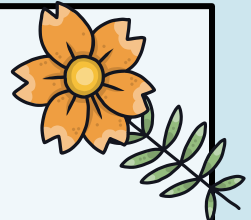
02 If you could name a newly discovered Dinosaur, what would you call it and why? What characteristics would this Dinosaur have?

03 What do you think life was like for Dinosaurs when they roamed the earth? How would they find food and protect themselves from predators?



# DISCUSSION QUESTIONS

A. Answer the questions.



04

Do you think it's possible for Dinosaurs to still exist somewhere on Earth today? Why or why not?

05

How do you think the world would be different if Dinosaurs were still alive today? How would humans interact with them?

06

If you found a Dinosaur fossil in your backyard, what would you do? How would you react, and who would you tell?